

ELECTRICAL OSCILLATIONS IN ANTENNAS AND INDUCTANCE COILS

By John M. Miller

CONTENTS

	Page
I. Introduction.....	677
II. Circuit with uniformly distributed inductance and capacity.....	679
III. The Antenna.....	680
1. Reactance of the aerial-ground portion.....	680
2. Natural frequencies of oscillation.....	681
(a) Loading coil in lead-in.....	682
(b) Condenser in lead-in.....	684
3. Effective resistance, inductance, and capacity.....	685
4. Equivalent circuit with lumped constants.....	689
5. Determination of static capacity and inductance.....	690
6. Determination of effective resistance, inductance, and capacity....	692
IV. The Inductance coil.....	694
1. Reactance of the coil.....	694
2. Natural frequencies of oscillation.....	695
Condenser across the terminals.....	695
3. Equivalent circuit with lumped constants.....	695

I. INTRODUCTION

A modern radiotelegraphic antenna generally consists of two portions, a vertical portion or "lead-in" and a horizontal portion or "aerial." At the lower end of the lead-in, coils or condensers or both are inserted to modify the natural frequency of the electrical oscillations in the system. When oscillating, the current throughout the entire lead-in is nearly constant and the inductances, capacities, and resistances in this portion may be considered as localized or lumped. In the horizontal portion, however, both the strength of the current and the voltage to earth vary from point to point and the distribution of current and voltage varies with the frequency. The inductance, capacity, and resistance of this portion must therefore be considered as distributed throughout its extent and its effective inductance, capacity, and resistance will depend upon the frequency. On this account the mathematical treatment of the oscillations of an antenna is not

as simple as that which applies to ordinary circuits in which all of the inductances and capacities may be considered as lumped.

The theory of circuits having uniformly distributed electrical characteristics such as cables, telephone lines, and transmission lines has been applied to antennas. The results of this theory do not seem to have been clearly brought out; hazy and sometimes erroneous ideas appear to be current in the literature, textbooks, and in the radio world in general so that the methods of antenna measurements are on a dubious footing. It is hoped that this paper may clear up some of these points. No attempt has been made to show how accurately this theory applies to actual antennas.

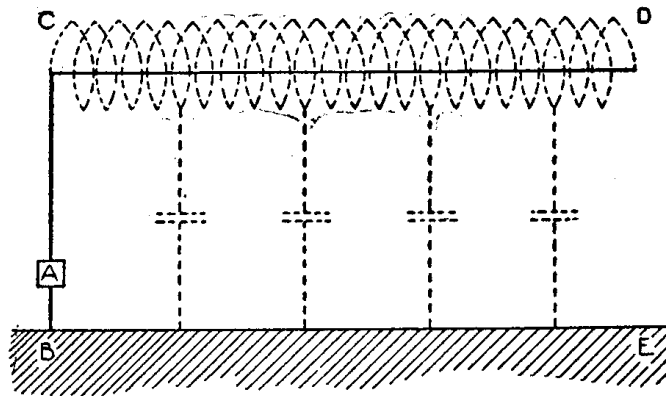


FIG. 1.—Antenna represented as a line with uniform distribution of inductance and capacity

The aerial-ground portion of the antenna, or aerial for short (CD in Fig. 1), will be treated as a line with uniformly distributed inductance, capacity, and resistance. As is common in the treatment of radio circuits the resistance will be considered to be so low as not to affect the frequency of the oscillations or the distribution of current and voltage. The lead-in, BC in Fig. 1, will be considered to be free from inductance or capacity excepting as inductance coils or condensers are inserted at A to modify the oscillations.

An inductance coil, particularly if a long single-layer solenoid, may also be treated from the standpoint of the transmission-line theory. The theoretical results obtained furnish an interesting explanation of certain well-known experimental results.

II. CIRCUIT WITH UNIFORMLY DISTRIBUTED INDUCTANCE AND CAPACITY

The theory, generally applicable to all circuits with uniformly distributed inductance and capacity, will be developed for the case of two parallel wires. The wires (Fig. 2) are of length l and of low resistance. The inductance per unit length L_1 is defined by the flux of magnetic force between the wires per unit of length that there would be if a steady current of 1 ampere were flowing in opposite directions in the two wires. The capacity per unit length C_1 is defined by the charge that there would be on a unit length of one of the wires if a constant emf of 1 volt were impressed between the wires. Further, the quantity $L_0 = l L_1$ would be the total inductance of the circuit if the current flow were the same at all parts. This would be the case if a constant or slowly

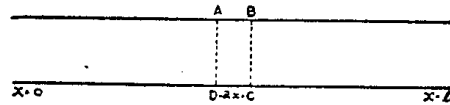


FIG. 2

alternating voltage were applied at $x=0$ and the far end ($x=l$) short-circuited. The quantity $C_0 = l C_1$ would represent the total capacity between the wires if a constant or slowly alternating voltage were applied at $x=0$ and the far end were open.

Let it be assumed, without defining the condition of the circuit at $x=l$, that a sinusoidal emf of periodicity $\omega = 2\pi f$ is impressed at $x=0$ giving rise to a current of instantaneous value i at A and a voltage between A and D equal to v . At B the current will be $i + \frac{\delta i}{\delta x} dx$ and the voltage from B to C will be $v + \frac{\delta v}{\delta x} dx$.

The voltage around the rectangle $ABCD$ will be equal to the rate of decrease of the induction through the rectangle, hence

$$\left(v + \frac{\delta v}{\delta x} dx\right) - v = -\frac{\delta}{\delta t} (L_1 i dx)$$

$$\frac{\delta v}{\delta x} = -L_1 \frac{\delta i}{\delta t} \quad (1)$$

Further, the rate of increase of the charge q on the elementary length of wire AB will be equal to the excess in the current flowing in at A over that flowing out at B .

Hence

$$\frac{\delta q}{\delta t} = \frac{d}{dt} (C_1 v dx) = i - \left(i + \frac{\delta i}{\delta x} dx \right)$$

$$-\frac{\delta i}{\delta x} = C_1 \frac{\delta v}{\delta t} \quad (2)$$

These equations (1) and (2) determine the propagation of the current and voltage waves along the wires. In the case of sinusoidal waves, the expressions

$$v = \cos \omega t (A \cos \omega \sqrt{C_1 L_1} x + B \sin \omega \sqrt{C_1 L_1} x) \quad (3)$$

$$i = \sin \omega t \sqrt{\frac{C_1}{L_1}} (A \sin \omega \sqrt{C_1 L_1} x - B \cos \omega \sqrt{C_1 L_1} x) \quad (4)$$

are solutions of the above equations as may be verified by substitution. The quantities A and B are constants depending upon the terminal conditions. The velocity of propagation of the waves, at high frequencies is $V = \frac{1}{\sqrt{C_1 L_1}}$.

III. THE ANTENNA

1. REACTANCE OF THE AERIAL-GROUND PORTION

Applying equations (3) and (4) to the aerial of an antenna and assuming that $x=0$ is the lead-in end while $x=l$ is the far end which is open, we may introduce the condition that the current is zero for $x=l$. From (4)

$$\frac{A}{B} = \cot \omega \sqrt{C_1 L_1} l \quad (5)$$

Now the reactance of the aerial, which includes all of the antenna but the lead-in, is given by the current and voltage at $x=0$. These are, from (3), (4), and (5),

$$v_0 = A \cos \omega t = B \cot \omega \sqrt{C_1 L_1} l \cos \omega t$$

$$i_0 = -\sqrt{\frac{C_1}{L_1}} B \sin \omega t.$$

The current leads the voltage when the cotangent is positive and lags when the cotangent is negative. The reactance of the aerial, given by the ratio of the maximum values of v_0 to i_0 , is

$$X = -\sqrt{\frac{L_1}{C_1}} \cot \omega \sqrt{C_1 L_1} l$$

or in terms of $C_o = lC_1$ and $L_o = lL_1$

$$X = -\sqrt{\frac{L_o}{C_o}} \cot \omega \sqrt{C_o L_o} \quad (6)$$

or since

$$V = \frac{I}{\sqrt{L_1 C_1}}$$

$$X = -L_1 V \cot \omega \sqrt{C_1 L_1} \text{ as given by J. S. Stone.}^1$$

At low frequencies the reactance is negative and hence the aerial behaves as a capacity. At the frequency $f = \frac{1}{4\sqrt{C_o L_o}}$

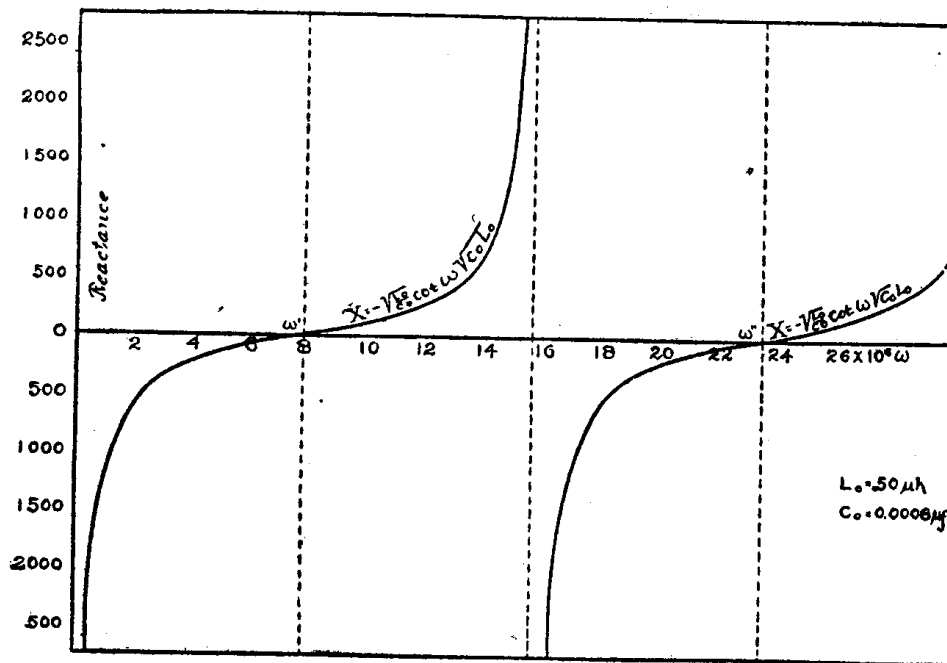


FIG. 3.—Variation of the reactance of the aerial of an antenna with the frequency

the reactance becomes zero and beyond this frequency is positive or inductive up to the frequency $f = \frac{1}{2\sqrt{C_o L_o}}$ at which the reactance becomes infinite. This variation of the aerial reactance with the frequency is shown by the cotangent curves in Fig. 3.

2. NATURAL FREQUENCIES OF OSCILLATION

Those frequencies at which the reactance of the aerial, as given by equation (6), becomes equal to zero are the natural frequencies of oscillation of the antenna (or frequencies of resonance) when the

¹J. S. Stone, Trans. Int. Congress, St. Louis, 8, p. 555; 1904.

lead-in is of zero reactance. They are given in Fig. 3 by the points of intersection of the cotangent curves with the axis of ordinates and by the equation

$$f = \frac{m}{4\sqrt{C_0 L_0}}; m = 1, 3, 5, \text{ etc.}$$

The corresponding wave lengths are given by

$$\lambda = \frac{V}{f} = \frac{l}{f\sqrt{C_0 L_0}} = \frac{4l}{m}$$

that is, $4/1, 4/3, 4/5, 4/7$, etc., times the length of the aerial. If, however, the lead-in has a reactance X_X , the natural frequencies

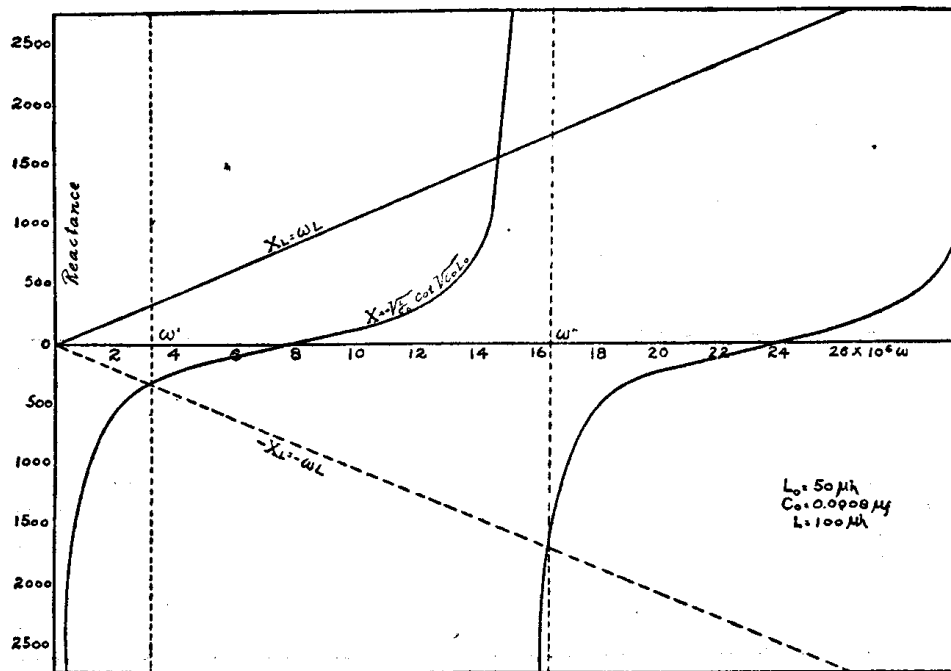


FIG. 4.—Curves of aerial and loading coil reactances

of oscillation are determined by the condition that the total reactance of lead-in plus aerial shall be zero; that is,

$$X_X + X = 0$$

provided that the reactances are in series with the driving emf.

(a) *Loading Coil in Lead-in.*—The most important practical case is that in which an inductance coil is inserted in the lead-in. If the coil has an inductance L , its reactance $X_L = \omega L$. This is a positive reactance increasing linearly with the frequency and represented in Fig. 4 by a solid line. Those frequencies at which the reactance of the coil is equal numerically but opposite in sign

to the reactance of the aerial, are the natural frequencies of oscillation of the loaded antenna since the total reactance $X_L + X = 0$. Graphically, these frequencies are determined by the intersection of the straight line $-X_L = -\omega L$ (shown by a dash line in Fig. 4) with the cotangent curves representing X . It is evident that the frequency is lowered by the insertion of the loading coil and that the higher natural frequencies of oscillation are no longer integral multiples of the lowest frequency.

The condition $X_L + X = 0$, which determines the natural frequencies of oscillation, leads to the equation

$$\omega L - \sqrt{\frac{L_0}{C_0}} \cot \omega \sqrt{C_0 L_0} = 0.$$

TABLE 1.—Data for Loaded Antenna Calculations

$\frac{L}{L_0}$	$\omega \sqrt{C_0 L_0}$	$\frac{1}{\sqrt{\frac{L}{L_0} + 3}}$	Difference, per cent	$\frac{L}{L_0}$	$\omega \sqrt{C_0 L_0}$	$\frac{1}{\sqrt{\frac{L}{L_0} + 3}}$	Difference, per cent
0.0	1.571	1.732	10.3	3.2	0.532	0.532	0.1
.1	1.429	1.519	6.3	3.3	.524	.525	.1
.2	1.314	1.369	4.2	3.4	.517	.518	.1
.3	1.220	1.257	3.0				
.4	1.142	1.168	2.3	3.5	.510	.511	.1
				3.6	.504	.504	.0
.5	1.077	1.095	1.7	3.7	.4977	.4979	.0
.6	1.021	1.035	1.4	3.8	.4916	.4919	.0
.7	.973	.984	1.1	3.9	.4859	.4860	.0
.8	.931	.939	.9				
.9	.894	.900	.7	4.0	.4801	.4804	.0
				4.5	.4548	.4549	.0
1.0	.860	.866	.7	5.0	.4330	.4330	.0
1.1	.831	.835	.5	5.5	.4141		
1.2	.804	.808	.5	6.0	.3974		
1.3	.779	.782	.4				
1.4	.757	.760	.4	6.5	.3826		
				7.0	.3693		
1.5	.736	.739	.4	7.5	.3574		
1.6	.717	.719	.3	8.0	.3465		
1.7	.699	.701	.3	8.5	.3366		
1.8	.683	.685	.3				
1.9	.668	.669	.3	9.0	.3275		
				9.5	.3189		
2.0	.653	.655	.3	10.0	.3111		
2.1	.640	.641	.2	11.0	.2972		
2.2	.627	.628	.2	12.0	.2850		
2.3	.615	.616	.2				
2.4	.604	.605	.2	13.0	.2741		
				14.0	.2644		
2.5	.593	.594	.2	15.0	.2556		
2.6	.583	.584	.2	16.0	.2476		
2.7	.574	.574	.2	17.0	.2402		
2.8	.564	.565	.1				
2.9	.556	.556	.1	18.0	.2338		
				19.0	.2277		
3.0	.547	.548	.1	20.0	.2219		
3.1	.539	.540	.1				

or

$$\frac{\cot \omega \sqrt{C_0 L_0}}{\omega \sqrt{C_0 L_0}} = \frac{L}{L_0} \tag{8}$$

This equation has been given by Guyau² and L. Cohen.³ It

² A. Guyau, *Lumiere Electrique*, 15, p. 133, 1911. ³ L. Cohen, *Electrical World*, 65, p. 286; 1915.

determines the periodicity ω and hence the frequency and wave length of the possible natural modes of oscillation when the distributed capacity and inductance of the aerial and the inductance of the loading coil are known. This equation can not, however, be solved directly; it may be solved graphically, as shown in Fig. 4, or a table may be prepared indirectly which gives the values

of $\omega\sqrt{C_0L_0}$ for different values of $\frac{L}{L_0}$, from which then ω, f , or λ may be determined. The second column of Table I gives these values for the lowest natural frequency of oscillation, which is of the major importance practically.

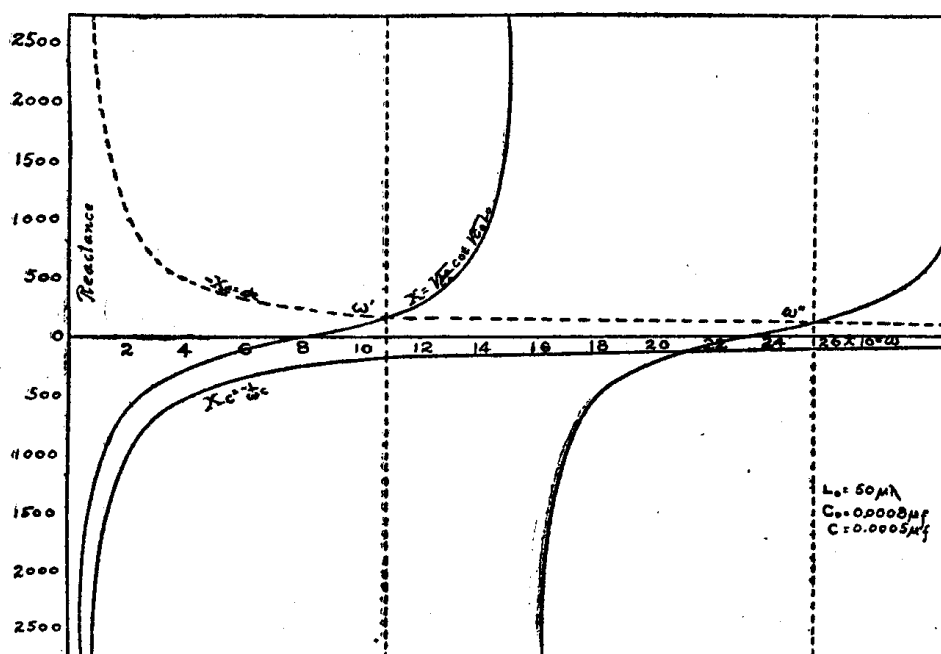


FIG. 5.—Curves of aerial and series condenser reactances

(b) *Condenser in Lead-in.*—At times in practice a condenser is inserted in the lead-in. If the capacity of the condenser is C , its reactance is $X_0 = -\frac{1}{\omega C}$. This reactance is shown in Fig. 5 by the hyperbola drawn in solid line. The intersection of the negative of this curve (drawn in dash line) with the cotangent curves representing X gives the frequencies for which $X_0 + X = 0$, and hence the natural frequencies of oscillation of the antenna. The frequencies are increased (the wave length decreased) by the insertion of the condenser and the oscillations of higher frequencies are not integral multiples of the lowest.

The condition $X_o + X = 0$ is expressed by the equation

$$-\frac{\tan \omega\sqrt{C_o L_o}}{\omega\sqrt{C_o L_o}} = \frac{C}{C_o} \quad (9)$$

which has also been given by Guyau. Equation (9) may be solved graphically as above or a table similar to Table 1 may be prepared giving $\omega\sqrt{C_o L_o}$ for different values of $\frac{C}{C_o}$. More complicated circuits may be solved in a similar manner.

3. EFFECTIVE RESISTANCE, INDUCTANCE, AND CAPACITY

In the following the most important practical case of a loading coil in the lead-in and the natural oscillation of lowest frequency alone will be considered. The problem is to replace the antenna

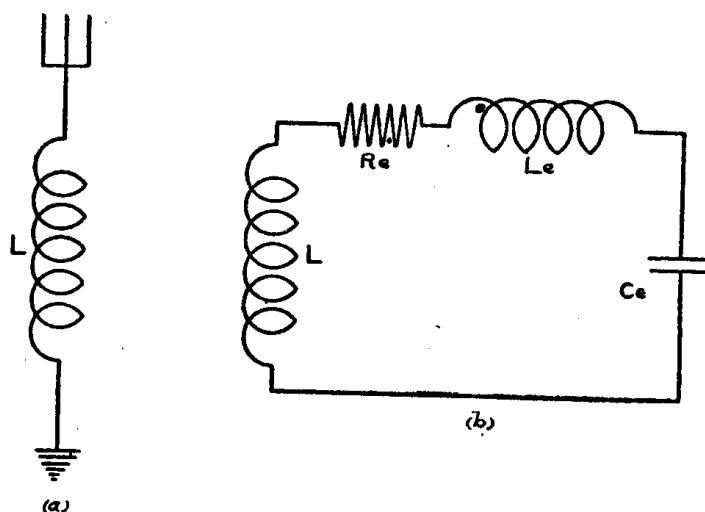


FIG. 6.—(a) Antenna with loading coil; (b) artificial antenna with lumped constants to represent antenna in (a)

of Fig. 6, (a), which has a loading coil L in the lead-in and an aerial with distributed characteristics, by a circuit (Fig. 6, (b)) consisting of the inductance L in series with lumped resistance R_e , inductance L_e , capacity C_e , which are equivalent to the aerial. It is necessary, however, to state how these effective values are to be defined.

In practice the quantities which are of importance in an antenna are the resonant wave length or frequency and the current at the current maximum. The quantities L_e and C_e are therefore defined as those which will give the circuit (b) the same resonant frequency as the antenna in (a). Further the three quantities L_e , C_e , and R_e must be such that the current in (b) will be the same

as the maximum in the antenna for the same applied emf whether undamped or damped with any decrement. These conditions determine L_o , C_o , and R_o uniquely at any given frequency and are the proper values for an artificial antenna which is to represent an actual antenna at a particular frequency. In the two circuits the corresponding maxima of magnetic energies and electrostatic energies and the dissipation of energy will be the same.

Zenneck⁴ has shown how these effective values of inductance capacity and resistance can be computed when the current and voltage distributions are known. Thus, if at any point x on the oscillator the current i and the voltage v are given by

$$i = I f(x); \quad v = V \phi(x)$$

where I is the value of the current at the current loop and V the maximum voltage, then the differential equation of the oscillation is

$$\frac{\partial I}{\partial t} \int R_1 f(x)^2 dx + \frac{\partial^2 I}{\partial t^2} \int L_1 f(x)^2 dx + \frac{I}{\frac{\int C_1 \phi(x) dx}{\int C_1 \phi(x)^2 dx}} = 0$$

where the integrals are taken over the whole oscillator. If we write

$$R_o = \int R_1 f(x)^2 dx \quad (10)$$

$$L_o = \int L_1 f(x)^2 dx \quad (11)$$

$$C_o = \frac{\{\int C_1 \phi(x) dx\}^2}{\int C_1 \phi(x)^2 dx} \quad (12)$$

the equation becomes

$$R_o \frac{\partial I}{\partial t} + L_o \frac{\partial^2 I}{\partial t^2} + \frac{I}{C_o} = 0$$

which is the differential equation of oscillation of a simple circuit with lumped resistance, inductance, and capacity of values R_o , L_o , and C_o and in which the current is the same as the maximum in the distributed case. In order to evaluate these quantities, it is necessary only to determine $f(x)$ and $\phi(x)$; that is, the functions which specify the distribution of current and voltage on the oscillator. In this connection it will be assumed that the resistance is not of importance in determining these distributions.

⁴ Zenneck, *Wireless Telegraphy* (translated by A. E. Selig), Note 40, p. 410.

At the far end of the aerial the current is zero; that is, for $x=l$; $i_l=0$. From equations (3) and (4) for $x=l$

$$v_l = \cos \omega t (A \cos \omega \sqrt{C_1 L_1} l + B \sin \omega \sqrt{C_1 L_1} l),$$

$$i_l = \sin \omega t \sqrt{\frac{C_1}{L_1}} (A \sin \omega \sqrt{C_1 L_1} l - B \cos \omega \sqrt{C_1 L_1} l);$$

and since $i_l=0$,

$$A \sin \omega \sqrt{C_1 L_1} l = B \cos \omega \sqrt{C_1 L_1} l.$$

From (3), then, we obtain

$$v = v_l \cos (\omega \sqrt{C_1 L_1} l - \omega \sqrt{C_1 L_1} x).$$

Hence

$$\phi(x) = \cos (\omega \sqrt{C_1 L_1} l - \omega \sqrt{C_1 L_1} x).$$

Now for $x=0$ from (4) we obtain

$$i_0 = -B \sqrt{\frac{C_1}{L_1}} \sin \omega t = -A \sqrt{\frac{C_1}{L_1}} \tan \omega \sqrt{C_1 L_1} l \sin \omega t,$$

whence

$$i = i_0 \frac{\sin (\omega \sqrt{C_1 L_1} l - \omega \sqrt{C_1 L_1} x)}{\sin \omega \sqrt{C_1 L_1} l}$$

and

$$f(x) = \frac{\sin (\omega \sqrt{C_1 L_1} l - \omega \sqrt{C_1 L_1} x)}{\sin \omega \sqrt{C_1 L_1} l}.$$

We can now evaluate the expressions (10), (11), and (12). From (10)

$$\begin{aligned} R_0 &= \int_0^l R_1 \frac{\sin^2 (\omega \sqrt{C_1 L_1} l - \omega \sqrt{C_1 L_1} x) dx}{\sin^2 \omega \sqrt{C_1 L_1} l} \\ &= \frac{R_1}{\sin^2 \omega \sqrt{C_1 L_1} l} \left[\frac{l}{2} - \frac{\sin 2 \omega \sqrt{C_1 L_1} l}{4 \omega \sqrt{C_1 L_1}} \right] \\ &= \frac{R_0}{2} \left[\frac{1}{\sin^2 \omega \sqrt{C_0 L_0}} - \frac{\cot \omega \sqrt{C_0 L_0}}{\omega \sqrt{C_0 L_0}} \right] \end{aligned} \quad (13)$$

and from (11) which contains the same form of integral

$$L_0 = \frac{L_0}{2} \left[\frac{1}{\sin^2 \omega \sqrt{C_0 L_0}} - \frac{\cot \omega \sqrt{C_0 L_0}}{\omega \sqrt{C_0 L_0}} \right] \quad (14)$$

and from (12)

$$\begin{aligned}
C_o &= \frac{\left\{ \int_0^l C_1 \cos(\omega\sqrt{C_1 L_1} l - \omega\sqrt{C_1 L_1} x) dx \right\}^2}{\int_0^l C_1 \cos^2(\omega\sqrt{C_1 L_1} l - \omega\sqrt{C_1 L_1} x) dx} \\
&= \frac{C_1^2 \frac{\sin^2 \omega\sqrt{C_1 L_1} l}{(\omega\sqrt{C_1 L_1})^2}}{C_1 \left(\frac{l}{2} + \frac{\sin 2 \omega\sqrt{C_1 L_1} l}{4 \omega\sqrt{C_1 L_1}} \right)} \\
&= C_o \frac{1}{\left[\frac{\omega\sqrt{C_o L_o} \cot \omega\sqrt{C_o L_o}}{2} + \frac{\omega^2 C_o L_o}{2 \sin^2 \omega\sqrt{C_o L_o}} \right]} \quad (15)
\end{aligned}$$

The expressions (14) and (15) should lead to the same value for the reactance X of the aerial as obtained before. It is readily shown that

$$X = \omega L_o - \frac{1}{\omega C_o} = -\sqrt{\frac{L_o}{C_o}} \cot \omega\sqrt{C_o L_o}$$

agreeing with equation (6).

It is of interest to investigate the values of these quantities at very low frequencies ($\omega=0$), frequently called the static values, and those corresponding to the natural frequency of the unloaded antenna or the so-called fundamental of the antenna. Substituting $\omega=0$ in (13), (14), and (15), and evaluating the indeterminate which enters in the first two cases, we obtain for the low-frequency values

$$\begin{aligned}
R_o &= \frac{R_o}{3} \\
L_o &= \frac{L_o}{3} \\
C_o &= C_o
\end{aligned} \quad (16)$$

At low frequencies the current is a maximum at the lead-in end of the aerial and falls off linearly to zero at the far end. The effective resistance and inductance are one-third of the values which would obtain if the current were the same throughout. The voltage is, however, the same at all points and hence the effective capacity is the capacity per unit length times the length or C_o .

At the fundamental of the antenna, the reactance X of equation (6) becomes equal to zero and hence $\omega\sqrt{C_o L_o} = \frac{\pi}{2}$. Substituting this value in (13), (14), and (15),

$$\begin{aligned}
 R_o &= \frac{R_o}{2} \\
 L_o &= \frac{L_o}{2} \\
 C_o &= \frac{8}{\pi^2} C_o.
 \end{aligned}
 \tag{17}$$

Hence, in going from low frequencies up to that of the fundamental of the antenna, the resistance (neglecting radiation and skin effect) and the inductance (neglecting skin effect) increase by 50 per cent, the capacity, however, decreases by about 20 per cent. The incorrect values $\frac{2}{\pi} L_o$ and $\frac{2}{\pi} C_o$ have been frequently given and commonly used as the values of the effective inductance and capacity of the antenna at its fundamental. These lead also to the incorrect value $L_o = \frac{L_o}{2}$ for the low-frequency inductance.⁵

The values for other frequencies may be obtained by substitution in (13), (14), (15). If the value L of the loading coil in the lead-in is given, the quantity $\omega\sqrt{C_o L_o}$ is directly obtained from Table I.

4. EQUIVALENT CIRCUIT WITH LUMPED CONSTANTS

In so far as the frequency or wave length is concerned, the aerial of the antenna may be considered to have constant values of inductance and capacity and the values of frequency or wave length for different loading coils can be computed with slight error using the simple formula applicable to circuits with lumped inductance and capacity. The values of inductance and capacity ascribed to the aerial are the static or low frequency; that is, $\frac{L_o}{3}$ for the inductance and C_o for the capacity. The total inductance in case the loading coil has a value L will be $L + \frac{L_o}{3}$ and the frequency is given by

$$f = \frac{1}{2\pi\sqrt{\left(L + \frac{L_o}{3}\right)C_o}}
 \tag{18}$$

⁵ These values are given by J. H. Morecroft in Proc. I. R. E., 5, p. 389; 1917. It may be shown that they lead to correct values for the reactance of the aerial and hence to correct values of frequency, as was verified by the experiments. They are not, however, the values which would be correct for an artificial antenna in which the current must equal the maximum in the actual antenna and in which the energies must also be equal to those in the antenna. The resistance values given by Prof. Morecroft agree with these requirements and with the values obtained here.

or the wave length in meters by

$$\lambda = 1884 \sqrt{\left(L + \frac{L_0}{3}\right) C_0} \quad (19)$$

where the inductance is expressed in microhenrys and the capacity in microfarads. The accuracy with which this formula gives the wave length can be determined by comparison with the exact formula (8). In the second column of Table 1 are given the values of $\omega\sqrt{C_0L_0}$ for different values of $\frac{L}{L_0}$ as computed by formula (8).*

Formula (18) may be written in the form $\omega\sqrt{C_0L_0} = \frac{1}{\sqrt{\frac{L}{L_0} + \frac{1}{3}}}$ so

that the values of $\omega\sqrt{C_0L_0}$, which are proportional to the frequency, may readily be computed from this formula also. These values are given in the third column and the per cent differences in the fourth column of Table 1. It is seen that formula (18) gives values for the frequency which are correct to less than 1 per cent excepting when very close to the fundamental of the antenna; that is, for very small values of L . Under these conditions the simple formula leads to values of the frequency which are too high. Hence to the degree of accuracy shown, which is amply sufficient in most practical cases, the aerial can be represented by its static inductance $\frac{L_0}{3}$ with its static capacity C_0 in series, and the frequency of oscillation with a loading coil L in the lead-in can be computed by the ordinary formula applicable to circuits with lumped constants.

In an article by L. Cohen,⁶ which has been copied in several other publications, it was stated that the use of the simple wave-length formula would lead to very large errors when applied to the antenna with distributed constants. The large errors found by Cohen are due to his having used the value L_0 for the inductance of the aerial, instead of $\frac{L_0}{3}$, in applying the simple formula.

5. DETERMINATION OF STATIC CAPACITY AND INDUCTANCE

In applying formula (8) to calculate the frequency of a loaded antenna, a knowledge of the quantities of L_0 and C_0 is required. In applying formula (18), $\frac{L_0}{3}$ and C_0 are required. Hence either

*L. Cohen, *Electrical World*, 65, p. 286; 1915.

formula may be used if the static capacity and inductance values are known. We will call these values simply the capacity C_a and inductance L_a of the antenna. Hence $C_a = C_o$, $L_a = \frac{L_o}{3}$ and the wave length from (19) is given by

$$\lambda = 1884 \sqrt{(L + L_a) C_a} \quad (20)$$

where inductance is expressed in microhenrys and capacity in microfarads, as before.

The capacity and inductance of the antenna are then readily determined experimentally by the familiar method of inserting, one after the other, two loading coils of known values L_1 and L_2 in the lead-in and determining the frequency of oscillation or wave length for each. From the observed wave lengths λ_1 and λ_2 and known values of the inserted inductances, the inductance of the antenna is given by

$$L_a = \frac{L_1 \lambda_2^2 - L_2 \lambda_1^2}{\lambda_1^2 - \lambda_2^2} \quad (21)$$

and the capacity of the antenna from either

$$\left. \begin{aligned} \lambda_1 &= 1884 \sqrt{(L_1 + L_a) C_a} \\ \lambda_2 &= 1884 \sqrt{(L_2 + L_a) C_a} \end{aligned} \right\} \quad (22)$$

using, preferably, the equation corresponding to the larger valued coil. This assumes that formula (20) holds exactly.

As an example, let us assume that the antenna has $L_o = 50$ microhenrys and $C_o = 0.001$ microfarad and that we insert two coils of 50 and 150 microhenrys and determine the wave lengths, experimentally. We know from formula (8) and Table 1 that the wave lengths would be found to be 491 and 771 m. From the observed wave lengths and known inductances, the value of L_a would be found by (21) to be

$$L_a = 17.8 \text{ microhenrys}$$

and from (22)

$$C_a = 0.00099, \text{ microfarad.}$$

C_a is very close to the assumed value C_o but L_a differs by 7 per cent from $\frac{L_o}{3}$. This accuracy would ordinarily be sufficient. We can, however, by a second approximation, derive from the experimental data a more accurate value of L_a . For, the observed value

of L_a furnishes rough values of $\frac{L_1}{L_0}$ and $\frac{L_2}{L_0}$, which in this example come out 0.96 and 2.88, respectively. But Table 1 gives the per cent error of formula (20) for different values of $\frac{L}{L_0}$ and shows that this formula gives a 0.7 per cent shorter wave length than 491 m (or 488 m) for $\frac{L}{L_0} = 0.96$ but no appreciable difference for $\frac{L}{L_0} = 2.88$. Recomputing L_a , using 488 and 771 m, gives

$$L_a = 0.0168$$

which is practically identical with the assumed $\frac{L_0}{3}$.

6. DETERMINATION OF EFFECTIVE RESISTANCE, INDUCTANCE, AND CAPACITY

When a source of undamped oscillations in a primary circuit induces current in a secondary tuned circuit, the current in the secondary, for a given emf, depends only upon the resistance of the secondary circuit. When damped oscillations are supplied by the source in the primary, the current in the secondary, for a given emf and primary decrement, depends upon the decrement of the secondary; that is, upon the resistance and ratio of capacity to inductance. The higher the decrement of the primary circuit relative to the decrement of the secondary the more strongly does the current in the secondary depend upon its own decrement. This is evident from the expression for the current I in the secondary circuit.

$$I^2 = \frac{N E_0^2}{4 f R^2 \delta' \left(1 + \frac{\delta'}{\delta} \right)}$$

where δ' is the decrement of the primary, δ that of the secondary, R the resistance of the secondary, f the frequency, E_0 the maximum value of the emf impressed on the primary, and N the wave-train frequency.

These facts suggest a method of determining the effective resistance, inductance, and capacity of an antenna at a given frequency in which all of the measurements are made at one frequency and which does not require any alteration of the antenna circuit whatsoever. The experimental circuits are arranged as shown in Fig. 7, where S represents a coil in the primary circuit which may be thrown either into the circuit of a source of undamped

or of damped oscillations. The coil L is the loading coil of the antenna, which may be thrown over to the measuring circuit containing a variable inductance L' , a variable condenser C' , and variable resistance R' . The condenser C' should be resistance free and shielded, the shielded terminal being connected to the ground side. First, the undamped source is tuned to the antenna, and then the $L'C'$ circuit tuned to the source. The resistance R' is then varied until the current is the same in the two positions. The resistance of the $L'C'$ circuit is then equal to R_e , the effective resistance of the aerial-ground portion of the antenna and $L'C' = L_e C_e$. Next, the damped source is tuned to the antenna and the change in current noted when the connection is thrown over to the $L'C'$ circuit. If the current increases, the value of C' is greater than C_e , and vice versa. By varying both L' and C' ,

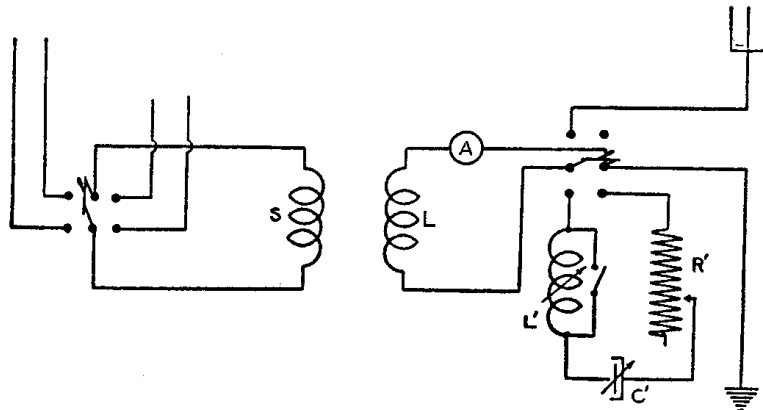


FIG. 7.—Circuits for determining the effective resistance, inductance, and capacity of an antenna

keeping the tuning and R' unchanged, the current can be adjusted to the same value in both positions. Then, since $L'C' = L_e C_e$ and $\frac{C'}{L'} = \frac{C_e}{L_e}$, the value of C' gives C_e and that of L' gives L_e . Large changes in the variometer setting may result in appreciable changes in its resistance so that the measurement should be repeated after the approximate values have been found. To eliminate the resistance of the variometer in determining R_e , the variometer is shorted and, using undamped oscillations, the resonance current is adjusted to equality in the two positions by varying R' . Then $R' = R_e$. The measurement requires steady sources of feebly damped and strongly damped current. The former is readily obtained by using a vacuum-tube generator. A resonance transformer and magnesium spark gap operating at a low-spark fre-

quency serve very satisfactorily for the latter source, or a single source of which the damping can be varied will suffice. An accuracy of 1 per cent is not difficult to obtain.

IV. THE INDUCTANCE COIL

The transmission-line theory can also be applied to the treatment of the effects of distributed capacity in inductance coils. In Fig. 8, (a), is represented a single-layer solenoid connected to a variable condenser C . A and B are the terminals of the coil, D the middle, and the condensers drawn in dotted lines are supposed to represent the capacities between the different parts of the coil. In Fig. 8, (b), the same coil is represented as a line with uniformly distributed inductance and capacity. These

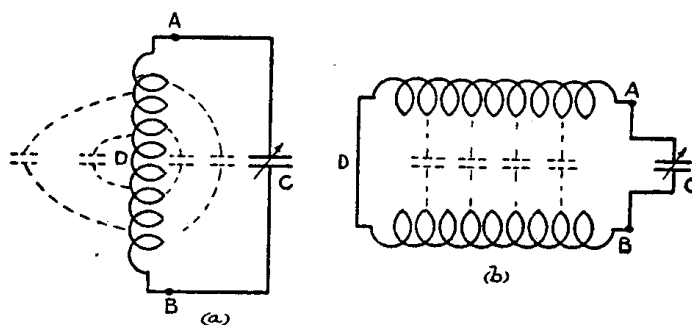


FIG. 8.—Inductance coil represented as a line with uniform distribution of inductance and capacity

assumptions are admittedly rough but are somewhat justified by the known similarity of the oscillations in long solenoids to those in a simple antenna.

1. REACTANCE OF THE COIL

Using the same notation as before, an expression for the reactance of the coil, regarded from the terminals AB ($x=0$) will be determined considering the line as closed at the far end D ($x=l$). Equations (3) and (4) will again be applied, taking account of the new terminal condition: that is, for $x=l$; $v=0$. Hence

$$A \cos \omega \sqrt{C_1 L_1} l = -B \sin \omega \sqrt{C_1 L_1} l$$

and for $x=0$

$$v_0 = A \cos \omega t = -B \tan \omega \sqrt{C_1 L_1} l \cos \omega t$$

$$i_0 = -\sqrt{\frac{C_1}{L_1}} B \sin \omega t$$

which gives for the reactance of the coil regarded from the terminals $A B$,

$$X' = \sqrt{\frac{L_1}{C_1}} \tan \omega \sqrt{C_1 L_1} l$$

or

$$X' = \sqrt{\frac{L_o}{C_o}} \tan \omega \sqrt{C_o L_o} \quad (23)$$

2. NATURAL FREQUENCIES OF OSCILLATION

At low frequencies the reactance of the coil is very small and positive but increases with increasing frequency and becomes infinite when $\omega \sqrt{C_o L_o} = \frac{\pi}{2}$. This represents the lowest frequency of natural oscillation of the coil when the terminals are open. Above this frequency the reactance is highly negative, approaching zero at the frequency $\omega \sqrt{C_o L_o} = \pi$. In this range of frequencies the coil behaves as a condenser and would require an inductance across the terminals to form a resonant circuit. At the frequency $\omega \sqrt{C_o L_o} = \pi$ the coil will oscillate with its terminals short-circuited. As the frequency is still further increased the reactance again becomes increasingly positive.

Condenser Across the Terminals.—The natural frequencies of oscillation of the coil when connected to a condenser C are given by the condition that the total reactance of the circuit shall be zero.

$$X' + X_o = 0$$

From this we have

$$\sqrt{\frac{L_o}{C_o}} \tan \omega \sqrt{C_o L_o} = \frac{1}{\omega C}$$

or

$$\frac{\cot \omega \sqrt{C_o L_o}}{\omega \sqrt{C_o L_o}} = \frac{C}{C_o} \quad (24)$$

This expression is the same as (8) obtained in the case of the loaded antenna, excepting that $\frac{C}{C_o}$ occurs on the right-hand side instead of $\frac{L}{L_o}$, and shows that the frequency is decreased and wave length increased by increasing the capacity across the coil in a manner entirely similar to the decrease in frequency produced by inserting loading coils in the antenna lead-in.

3. EQUIVALENT CIRCUIT WITH LUMPED CONSTANTS

It is of interest to investigate the effective values of inductance and capacity of the coil at very low frequencies.

Expanding the tangent in equation (23) into a series we find

$$X' = \omega L_0 \left(1 + \frac{\omega^2 C_0 L_0}{3} + \dots \right)$$

and neglecting higher-power terms this may be written

$$X' = \frac{(\omega L_0) \left(-\frac{3}{\omega C_0} \right)}{\omega L_0 - \frac{3}{\omega C_0}}$$

This is the reactance of an inductance L_0 in parallel with a capacity $\frac{C_0}{3}$, which shows that at low frequencies the coil may be regarded

as an inductance L_0 with a capacity $\frac{C_0}{3}$ across the terminals and therefore in parallel with the external condenser C . Since at low frequencies the current is uniform throughout the whole coil, it is self-evident that its inductance should be L_0 .

Now, the similarity between equations (24) and (8) shows that, just as accurately as in the similar case of the loaded antenna, the frequency of oscillation of a coil with *any capacity* C across the terminals is given by the formula

$$f = \frac{1}{2\pi \sqrt{L_0 \left(C + \frac{C_0}{3} \right)}} \quad (25)$$

This, however, is *also* the expression for the frequency of a coil of pure inductance L_0 with a capacity $\frac{C_0}{3}$ across its terminals and which is in parallel with an external capacity C . Therefore, in so far as frequency relations are concerned, an inductance coil with distributed capacity is closely equivalent at any frequency to a pure inductance, equal to the low-frequency inductance (neglecting skin effect), with a constant capacity across its terminals. This is a well-known result of experiment,⁷ at least in the case of single-layer solenoids which, considering the changes in current and voltage distribution in the coil with changing frequency, is not otherwise self-evident.

WASHINGTON, March 9, 1918.

⁷ G. W. O. Howe, Proc. Phys. Soc. London, **24**, p. 251, 1912; F. A. Kolster, Proc. Inst. Radio Eng., **1**, p. 19, 1913; J. C. Hubbard, Phys. Rev., **9**, p. 529, 1917.