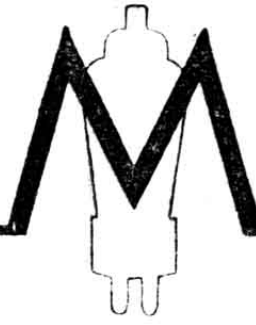


VARIABLE-MU H.F. PENTODE



V.P.2

OPERATING DATA.

Filament Voltage	2.0 V.
Filament Current	0.18 A.
Max. Anode Voltage	150 V.
Max. Auxiliary Grid Voltage..	150 V.

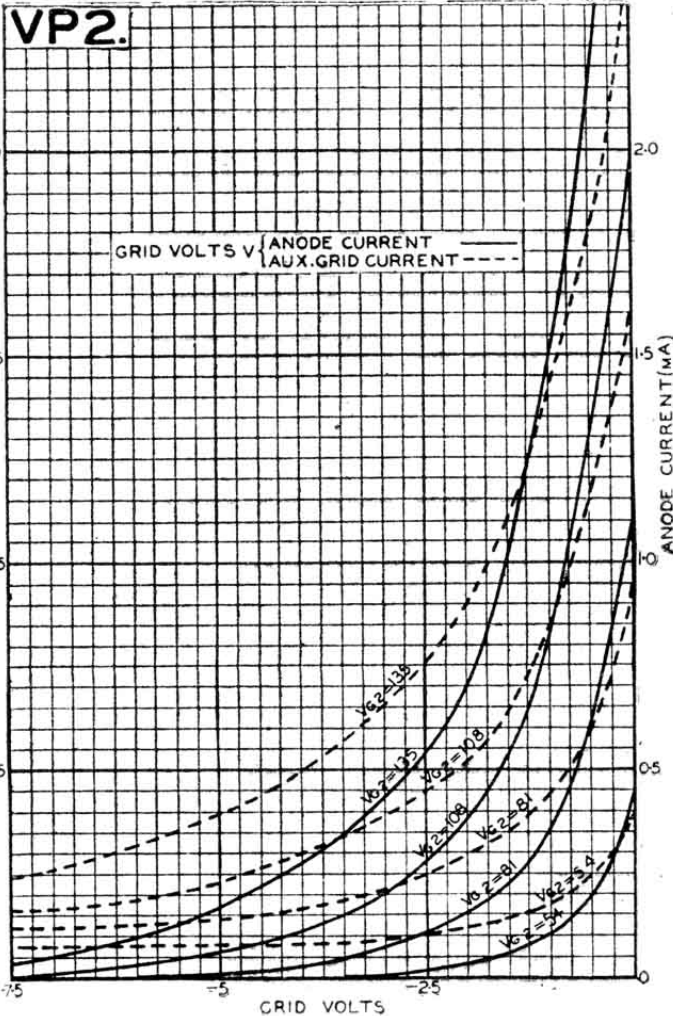
CHARACTERISTICS.

(1) At Anode Volts 150; Auxiliary Grid Volts 150; Control Grid Volts Zero.

Anode Impedance 750,000 ohms.
Mutual Conductance 1.75 mA/V.

(2) At Anode Volts 150; Auxiliary Grid Volts 150; Control Grid Volts -7.0.

Mutual Conductance 0.017 mA/V.



APPLICATION.

Radio frequency or intermediate frequency amplifier in receivers in which volume control is effected by manual or automatic adjustment of grid bias.

GRID BIAS.

Full control of volume can be obtained with a range of grid bias of approximately 9 volts.

BASE.

Standard 7-pin base. For connections see page 109.

BULB FINISH.

The V.P.2 is supplied with metallised bulb only.

PRICE 11/-